

ANNUAL REPORT 2023-2024

Where Every Smile Counts,
Every Voice Matters!



Financial Year 2023-2024



Maya CARE's
First-Ever Bindu Team Meet!

Contents:

Director's Reflection: Leading with Vision	3
Foundation Insights: Unveiling Maya CARE	4
Project Bindu	5
Visionary Pathways: Guiding Principle	6
Impact Milestones: Celebrating Success	7
Journey Chronicles: 14 Years of Impact	9
Boardroom Champions: Steering Leadership	10
Bindu Heroes: Champions of Change	11
Talent Harvest: Recruiting Excellence	14
Training Triumphs: Nurturing Skills	15
Focus Fusion: Targeted Achievements	16
Celebrating Joyful Moments for the Elderly	22
Health Horizon: Wellness Outreach Report	18
May I Help You' Help Desk Initiative	19
Community Engagement Highlights:	22
Scaling the Long-Term Sustainability Sources	23

Regional Helpline Implementation and Technological Integration	24
Nritya Vidya	25
Global Footprint: Extending Our Reach	26
Special Moments: Maya CARE's First Offline Confluence	29
Success Chronicles: Inspirational Stories	33
Elderly Engagements: Personalized Care Stories	36
Testimonials	39
Leadership Recognition and Awards	40
Awards and Achievements Showcase	41
Media Marvels: Coverage Highlights	42
Hall of Fame: Acknowledging Excellence	44
Gratitude for Your Unwavering Dedication	45
Contact Information	47

Founders' Reflection: Leading with Vision



As we reflect on the journey of Maya CARE, we are overwhelmed with gratitude for the incredible strides our team has made in serving the elderly and economically empowering Champions with disabilities (CWDs). What began as a humble initiative in 2009 has blossomed into a beacon of hope and inclusivity, touching the lives of thousands across India, UK and Nepal.

Through Project BINDU, our teams of diverse abilities have showcased remarkable resilience, innovation, and dedication in their roles, proving that disability is never a barrier to success. Our volunteers continue to serve with compassion across cities. As we look to the future, our commitment to expanding our reach and impact remains unwavering. We envision Maya CARE as a global leader in elderly care, with helplines in every spoken language, managed by PWDs in their respective countries. We strive to continue breaking down barriers and stereotypes, creating a world where everyone is valued and empowered.

But our journey and struggle is far from over. As we embark on the next chapter, we invite you to join us in our mission to build a more inclusive and compassionate society. Together, let's continue to lead with vision, passion, and a deep sense of purpose, as we work towards a future where everyone can live with dignity, respect, and joy.

Thank you for your unwavering support and dedication to the Maya CARE family.

Warm regards,

Abhay Joshi and Manjiri Gokhale Joshi.



Foundation Insights: Unveiling Maya CARE

Maya CARE stands as a beacon of hope and empowerment, driven by a profound commitment to serving the elderly and Champions with Disabilities (CWDs). Rooted in compassion and fueled by dedication, our foundation operates on the principles of inclusivity, integrity, and responsibility. Let's delve deeper into the visionary pathways that guide us:

Vision:

Maya Care Foundation was founded with a double-edged vision: helping the elderly but by allowing the Foundation to be wholly run by Champions with Disabilities (PWDs), thereby offering a unique opportunity to a section of society PWDs who could now dream of building a career based on empathy, understanding, nurturing and creating a professionally run global organization with a helpline in every spoken language of the world managed by a differently abled person in that country.

Mission:

To serve the elderly in every city of the globe and to enable PWDs to become economically independent.



Project Bindu

Within the heart of Maya CARE beats the spirit of our Bindu heroes, who serve as the driving force behind positive change within our organization. With their resilience and determination, they inspire others and exemplify the transformative power of empowerment and inclusion. The three special teams of Project Bindu—Data Team, Voice Team, and Power Team—reflect a remarkable coordination, each overcoming their unique challenges and turning them into opportunities for growth. Whether it's maintaining records, managing helplines, or coordinating external partnerships, their collective efforts showcase the profound impact of teamwork and dedication in creating meaningful change.

BINDU (In Sanskrit), means focus.

- Project BINDU demonstrates how focussed efforts in motivating, training and mentoring PwDs in professional management skills and removing distractions can help unskilled PwDs to scale greater heights.
- Award-winning Innovation that transforms people with disability who have never worked, or have skills, into responsible, financially independent professionals with leadership aspirations.
- Project BINDU (synonymous with PwDs across Maya CARE) is divided into three teams.

Voice Team



Visually Impaired

Power Team



Locomotor

Data Team



Cerebral Palsy

Visionary Pathways: Guiding Principles:



Empathy and Integrity:

We approach every interaction with empathy, understanding the unique needs of the elderly and CWDs. Our integrity ensures the highest ethical standards in all endeavors.

Inclusivity and Diversity: Maya CARE celebrates diversity, creating a space where all feel respected and empowered to contribute.

Responsibility and Accountability:

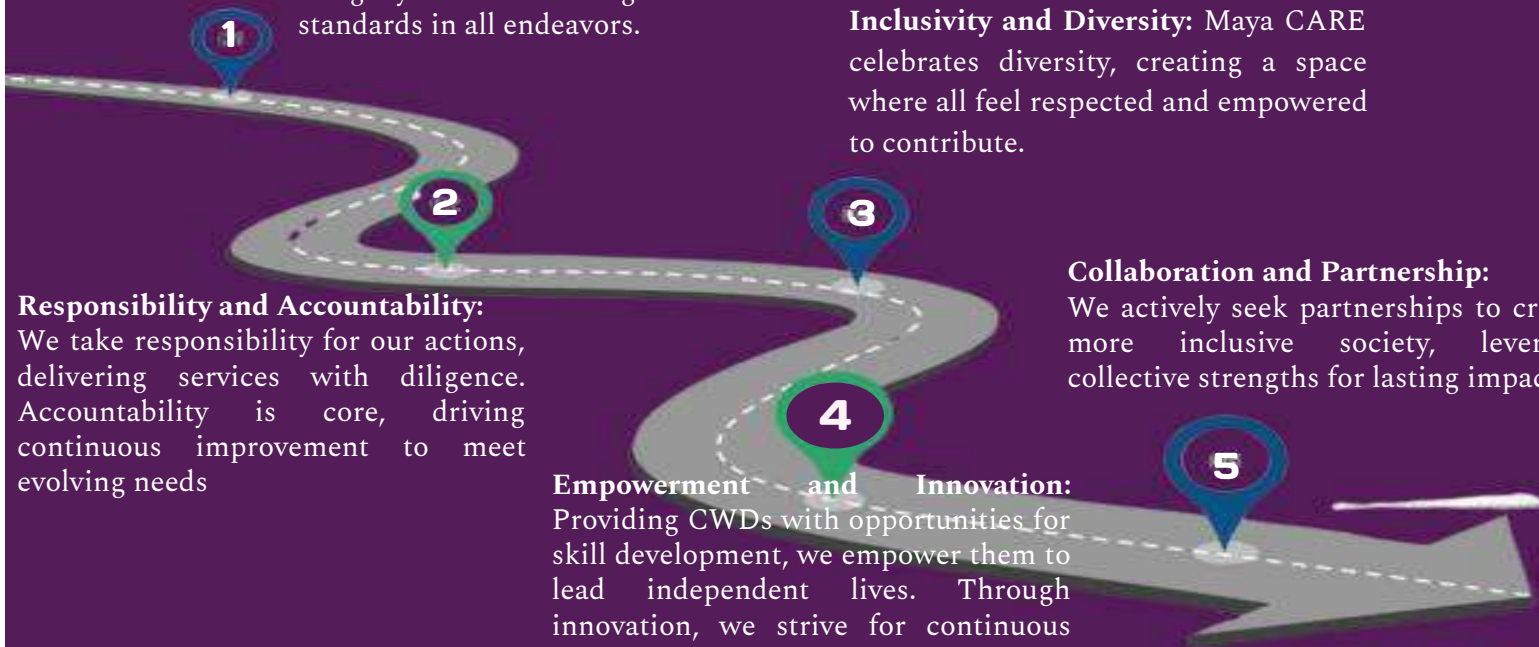
We take responsibility for our actions, delivering services with diligence. Accountability is core, driving continuous improvement to meet evolving needs

Collaboration and Partnership:

We actively seek partnerships to create a more inclusive society, leveraging collective strengths for lasting impact.

Empowerment and Innovation:

Providing CWDs with opportunities for skill development, we empower them to lead independent lives. Through innovation, we strive for continuous improvement.



Impact Milestones: Celebrating Success:

Empowering Bindu: Transformative Initiatives

Maya CARE takes immense pride in its unwavering commitment to economically empower Champions with Disabilities (CWDs), lovingly referred to as Bindu. Through transformative initiatives meticulously designed to foster growth and inclusion in society, we embark on a journey of empowerment. Our approach is centered around intensive training, mentoring, and coaching, aimed at nurturing Bindu into leaders capable of steering sustainable organizations. Since its inception in 2020, this remarkable initiative has not only provided livelihood opportunities for over 1760 CWDs but has also revolutionised professional and empathetic services for the elderly. Maya CARE stands as a beacon of support, not only catering to the needs of this vulnerable demographic but also paving the way for career opportunities, enabling Bindu to thrive.

2023-2024



635

2020-2024



1760



Impact Milestones: Celebrating Success:

Embracing Elders: Compassionate Care Efforts

At Maya CARE, we hold a steadfast dedication to providing compassionate care for the elderly, recognizing them as invaluable members of our community deserving of respect and support. Through our dedicated team of volunteers, we offer a wide array of services, ranging from companionship to assistance with daily tasks, ensuring their overall well-being. To date, our endeavors have resulted in over 32,792 personal visits and 3,733 care home activities, leaving a significant impact. With a network of 2826 volunteers spanning across 74 cities in India, we continue to serve more than 1626 elderly beneficiaries. Maya CARE's efforts aim to enhance the quality of life for elders, ensuring they feel valued, heard, and supported in every step of their journey.

2023-2024

6,931

2014-2024

32,792

Elderly Services



Journey Chronicles: 14 Years of Impact

Over the past 14 years, Maya CARE has embarked on a transformative journey, leaving an indelible mark on the lives of countless elderly and differently-abled individuals. Initially, during its first 11 years of existence, Maya CARE faced significant challenges. With only five differently-abled individuals managing data entry and helplines, and lacking landlines or offices, funding was solely sourced from the founders' personal salaries, despite being at their retirement age and facing personal circumstances. Despite these obstacles, Maya CARE persevered. However, due to a lack of substantial funding, Maya CARE was eventually forced to close.



After much consideration and continued efforts to attract potential donors, in 2021, Maya CARE successfully established its sustainable business process outsourcing unit. Today, it boasts its own clientele, and its effective services have enabled it to stand strongly once again. Our journey has been characterized by resilience, compassion, and an unwavering dedication to our mission of empowering the differently-abled and embracing elders. As we take a moment to reflect on our accomplishments, we eagerly anticipate the continued growth and impact of Maya CARE in the years ahead.

Boardroom Champions: Steering Leadership



Dr. Suresh Gokhale
Director

MBBS, DCh and holds a Fellowship in sports medicine



Mrs. Manjiri Gokhale Joshi
Founder Director

Master's degree from Oxford University. Mentor & Author



Mr. Abhay Joshi
Co-Founder Director

Founder and Director of Elephant Connect & Educational Foundation, VI



Dr. Mandakini Pansare
Independent Director

MBBS, MD (Physiology), Dr. of Science.



Mr. Madan Gokhale
Director

MBA from IME, Tennis coach.



Mrs. Sudha Santhanam
Independent Director

Chartered Accountant



Dr. Zubair Kazi
Independent Director

Senior Consultant Radiologist



Ms. Joyita Mondal
Independent Director

Judge of a Lok Adalat & Member of a judicial panel of a civil court.

Bindu Heroes: Champions of Change

Profiles of individuals whose lives have been transformed by Maya CARE's initiatives.



Jyoti More,
HR Coordinator, India

Leading with Vision: Starting as a data entry operator in 2010, Jyoti has risen to become a leader coordinating Maya CARE's operations across 74 Indian cities, showcasing perseverance and dedication.



Abhijit Mali,
National Coordinator

Rising Above Adversity: Despite a debilitating accident, Abhijit pursued education and now leads as a Co-national Coordinator, showcasing exceptional leadership and determination.



Shikha Vishwakarma,
Head, Special Projects

Empowering Others: Recognized for her outstanding contributions, Shikha manages vital projects at Maya CARE Foundation, proving that disability is never a barrier to success.



Anupama Kulkarni,
Administration Assistant

Overcoming Obstacles: Despite facing hearing impairment, Anupama pursued her education and now serves as an Administration Assistant at Maya CARE, proving that determination knows no bounds.

Bindu Heroes: Champions of Change

Profiles of individuals whose lives have been transformed by Maya CARE's initiatives.



Sandhya Atram
BPM Team Manager

Defying Limits: Born with physical challenges, Sandhya's resilience led her to manage Maya CARE's operations and spearhead multiple projects. She currently leads the business process outsourcing unit handling eight clients, demonstrating exceptional leadership.



Pritam Das
Head, Fundraising

A wheelchair-bound individual, found support from Maya Care Foundation after a 2008 accident. He now works as a team manager and advocates for disabled individuals, contributing to a more inclusive society.



Savita Subedar
Coordinator, Nepal

Mumbai-based Master's graduate with proficiency in Spoken English, MS Office, and leadership, currently leads elderly service management at Nepal county, managing projects like elderly visit coordination, Salesforce, Helpline, Branding, and Social Media.



Sowmya S
Coordinator, UK

From Bangalore, successfully overcomes challenges to achieve her vision after deteriorating her eyesight at 15. At Maya CARE she managing three projects, and under her leadership, the foundation has transformed the lives of many people with disabilities.

Bindu Heroes: Champions of Change



Madhuri Kharate
Project Coordinator

Based in Buldhana district, Maharashtra, A graduate and DTAD, at Maya Care, managing four key projects including CGI training, personal donation, PR project leadership, and work placement training programs.



Shubhangi Kharate
project coordinator

Based in Buldhana district, Maharashtra, A skilled State Coordinator at Maya Care, with a Master's degree in Arts and BFSI specialization, manages four projects with team leaders. Her proficiency in Excel, meticulous record-keeping reflect her commitment and excellence in her role.



Ayush Garg,
Project Coordinator

From Delhi native with a Bachelor of Arts and technical skills, is currently a Project Coordinator at Maya CARE, responsible for managing helplines, CSR outreach, and service coordination



Talent Harvest: Recruiting Excellence

Job Fair Triumphs: Bridging Opportunities

Maya CARE's job fairs serve as transformative platforms, bridging the gap between talented individuals and meaningful employment opportunities. These events are more than just job hunts; they represent a bridge to economic independence and inclusion for our Bindu. Through strategic partnerships and personalised support, we empower them to navigate the job market with confidence and purpose.

Total No of PWD Recruited

2023-2024

635

2020-2024

1760

Training Triumphs: Nurturing Skills

Achievement Through Training: Building Expertise

Through meticulously crafted training programs, Maya CARE equips our Bindu with the essential skills and confidence needed to excel in the job market. Our comprehensive approach focuses on soft skills development, communication proficiency, and industry-specific knowledge, ensuring participants are well-prepared to seize diverse job opportunities.

To date, we've successfully trained Champion with Disabilities, with many securing positions in esteemed corporations, like Indigo Airlines, Amazon, Future Generali, and Maya CARE, becoming integral members of our workforce.

The screenshot displays a Zoom meeting interface. The main window shows a Google Sheet titled 'List of Bindu' with columns A through K. The data includes employee IDs, names, designations, genders, cities, and salaries. A formula bar at the bottom shows the formula for cell B2: `=VLOOKUP(G14,A1:G11,3,0)`. The right sidebar shows a list of participants, including Soma, Sonal, Subhadra, Sumit, Sunita, Umesh, Vaishnavi, Vanshika, Vasanta, Vijay, Vikas, and Zeba. The bottom of the screen shows the Zoom control bar with buttons for Unmute, Start Video, Security, Participants, Share Screen, Reactions, Apps, Whiteboards, More, and End.

A	B	C	D	E	F	G	H	I	J	K
1003	Sakshi Mehta	Asst. Manager	Purchase	Female	Mumbai	98000			Emp Id	
1004	Reena Kumari	Asst. Supervisor	Sales	Female	Pune	95000			Emp Name	
1005	Vikas Singh	Accountant	Admin	Male	Mumbai	90000			Desg	
1006	Ajay Kale	CSR	Sales	Male	Mumbai	85000			Dept	
1007	Sanjay Jadhav	CSR	Sales	Male	Pune	80000			Gender	
1008	Sameer Shaikh	Accountant	Admin	Male	Mumbai	86000			City	
1009	Sangita Singh	CSR	Sales	Female	Mumbai	95000			Payout	
1010	Ravi Kale	CSR	Sales	Male	Mumbai	65000				

2023-2024

375

2020-2024

1760

Training

Placement Pioneers: Empowering Futures

Maya CARE's placement initiatives serve as beacons of empowerment, connecting Bindu with suitable job placements across various industries. Through strategic collaborations and tailored support, we strive to ensure every individual finds a fulfilling and rewarding career path, fostering economic independence and inclusion.

Corporate Placement

2023-2024



48

2022-2024



52



**FUTURE
GENERALI**
TOTAL INSURANCE SOLUTIONS



WorkIndia



Celebrating Joyful Moments for the Elderly

The Maya CARE Foundation hosts a variety of activities in care homes to bring joy to elderly residents. These events include talks on regional topics, magic shows, classical dance performances, and celebrations of festivals such as Holi, Diwali, New Year, Christmas, Raksha Bandhan, Republic Day, Independence Day, and Mother's Day. Additionally, activities like drawing, singing, and planting are organized. Dedicated volunteers continuously engage the residents, ensuring they experience happiness and fulfillment. So far, we have completed 3,733 care home activities.



Health Horizon: Wellness Outreach Report

Comprehensive Health Support for the Elderly (Health Camp)

Maya CARE's wellness outreach initiatives are dedicated to promoting the health and well-being of our elderly beneficiaries. Through regular health check-ups and assistance with doctor appointments, we prioritize the holistic health of our elders. Our aim is to ensure that our beneficiaries can live life to the fullest, enjoying optimal health and well-being.

2023-2024



7

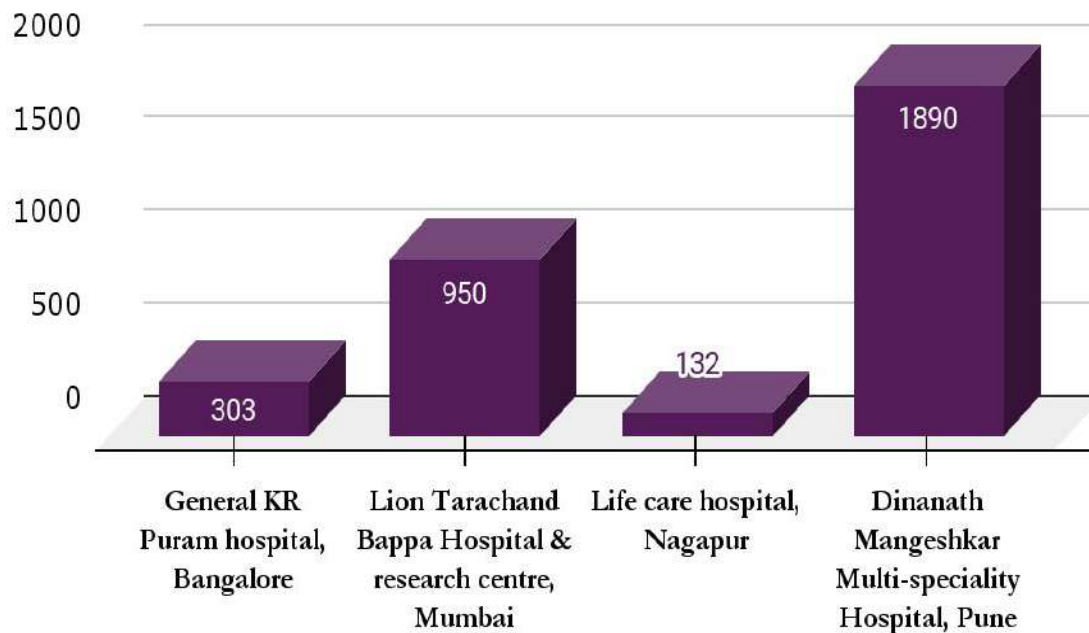
Total Health Camps



May I Help You' Help Desk Initiative

With the successful establishment of 'May I Help You' help desks across Mumbai, Pune, Nagpur, and Bangalore, we have been able to assist hospital patients and elderly visitors alike. These help desks provide essential support, ensuring that elderly individuals receive the assistance they need during hospital visits.

Maya CARE Help Desk Services





2023-2024 ➔ 3,275

Total Help desk services

Medical Equipment Distribution

The arrangement of over 100 free health camps has provided satisfactory treatment to the elderly, ensuring they have access to essential medical services. Additionally, the distribution of over 15 oxygen concentrators has saved lives across Pune and Mumbai, further supporting our commitment to the health and well-being of our beneficiaries

2023-2024



15

2014-2024



50

**Oxygen concentrators
Distribution**



Community Engagement Highlights

Participation in the Delhi Half Marathon 2023-2024 with a team comprising our elderly and differently-abled members led to the establishment of a charity corridor named with fame and supported by **TATA POWER**, alongside contributions from other donors. We extend our heartfelt thanks to each and everyone for their support.



Scaling the Long-Term Sustainability Sources

Business Process Management Outsourcing (BPM)

Maya CARE BPM (Business Process Management) division, established in November 2021, specializes in providing outsourced work performed by Champions with Disabilities (PWDs) and facilitating their inclusion within organizations. Our comprehensive range of services includes all generic back-office operations, data maintenance and curation, customer call handling, query resolution, basic coordination, and more. We tailor work allocation based on the type and severity of disability, ensuring equal opportunities for all. Additionally, we offer helpline services in all Indian languages and assist with CV search, screening, and candidate engagement. Through BPM, we are not only empowering PWDs economically but also fostering inclusivity and diversity in the corporate world. Join us in our journey towards creating a more inclusive society where every individual is valued and empowered to succeed.



Client: ISS Facility Services

- Project: Employee Stress Management helpdesk with multi-lingual support



Client: SHAIP AI -Human Generated Global Transcription Services

- **Project:** SHAIP AI-based transcription platform which provides audio to us and we have to convert the transcript in different languages like Marathi, Hindi, English, Gujarati, Bengali, Urdu etc.

BPM Project

2023-2024

2

2021-2024

8

Regional Helpline Implementation and Technological Integration



Maya CARE has successfully achieved its goal of establishing a separate helpline in every regional language, greatly enhancing our coordinators' ability to assist our beneficiaries effectively. This helpline ensures that each person with disabilities, regardless of their diverse background, receives effective coordination and management of services in their region. Additionally, the implementation of Salesforce technology has streamlined our data management, consolidating all information into one tool. This integration has made coordination for free services, both for volunteers and elderly beneficiaries, more efficient and timely. Regular reminders ensure that nothing is missed, significantly improving our operations. The year 2022-23 marked a significant change in our work environment, reflecting these advancements and their positive impact.

2023-2024

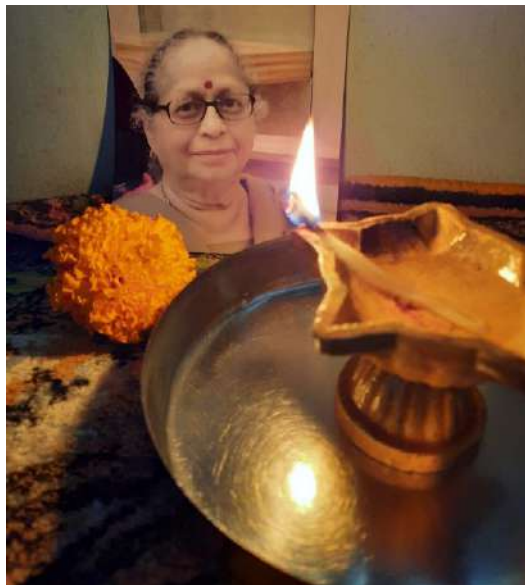
7487

Helpline Calls

Nritya Vidya

The Nritya Vidya initiative was launched on April 20th, 2022, to mark the first death anniversary of the late Dr Vidya Gokhale, Co-founder of Maya CARE Foundation. Through this initiative, we hope to support two deserving sections of society providing a:

- Platform for classical dance performers to showcase their talent at a public forum.
- Much needed engagement for the elderly living a lonely, under-stimulated existence in CARE homes/rehabilitation/palliative CARE centers.



2023-2024

**India - 1
UK - 1**

2022-2024

**India - 36
UK - 7**

Nritya Vidya



Global Footprint: Extending Our Reach



From humble beginnings, Maya CARE has expanded its reach across borders, serving elderly and economically empowering differently abled individuals in different countries like India, UK, and Nepal. Our commitment to economically empowering Bindu and embracing elders knows no bounds, as we continue to expand our footprint and make a positive impact on a global scale.



India

74

UK

4

Nepal

1

Total No of Cities

Maya CARE UK

Started in Milton Keynes, currently active in 4 cities: Milton Keynes, London and Manchester. We are expanding to Aylesbury, Watford and Reading.

Maya CARE has 70 registered volunteers across the UK.



UK Elderly Services

2023-2024



34

2021-2024



180



Maya CARE Nepal

Started in September 2023, currently active in 1 city kathmandu. Maya CARE has 26 registered volunteers across Kathmandu with expansion plans for Bhaktapur and Nagarkot



2023-2024

PwDs

20

Beneficiaries

7

Volunteers

26

Special Moments: Maya CARE's First Offline Confluence

On December 9th 2023, Maya CARE orchestrated a monumental event - our inaugural offline confluence in Pune. This historic gathering united volunteers, beneficiaries, partners, and supporters, culminating in a celebration of our collective achievements and a reaffirmation of our unwavering commitment to our mission. After 14 years of virtual interactions through Zoom, video calls, and chats, this physical meet marked a significant milestone in our journey. The day was filled with remarkable moments, particularly for our differently-abled participants, for whom the experience of flight became a remarkable and enjoyable adventure.

First Ever meet





**December 9th 2023 event
Special Moments**

Following this, on December 27th, a small gathering with the Bindu champions and our dedicated volunteers took place at the Bangalore Care Home, where our beloved founders, Mr. and Mrs. Abhay and Manjiri Joshi, spoke about the organization's impact. This offline meet was a first-time experience and brought a remarkable day among our beneficiaries.



Dec 27 2023 Bangalore event
At NAMS sneha sadan old age home
Interaction with volunteers, and Bindus.

Success Chronicles: Inspirational Stories

From Determination to Success: The Inspiring Journey of Mahesh Datlecha

Mahesh Datlecha, a graduate of Devi Ahilya Vishwavidyalaya (DAVV), was born with low vision and faced numerous challenges in finding employment. After completing his graduation, he searched for suitable employment but struggled due to a lack of relevant skills and experience. In 2022, Mahesh joined a skill development training program at Maya CARE Foundation, which provided him with essential professional skills, improved communication abilities, and renewed motivation and self-confidence.

With the support of Maya CARE, Mahesh successfully navigated the interview process for a position at IndiGo Airlines, becoming an Officer at IndiGo's indoor location. His achievement has brought financial independence and stability, allowing him to contribute significantly to his family's well-being. His parents' joy and pride serve as a constant reminder of the milestones he has achieved.

Mahesh's story is a shining example of overcoming adversity through determination and the right support. His gratitude towards Maya CARE Foundation is profound, as the organization played a pivotal role in transforming his life. Through their unwavering support and comprehensive training, Maya CARE not only helped Mahesh realize his dream job but also enabled him to become a source of inspiration for many others facing similar challenges.

In Mahesh's own words, seeing the satisfaction on his parents' faces brings him immense happiness. His journey from a visually impaired graduate struggling to find employment to a confident and successful professional at IndiGo Airlines underscores the incredible power of resilience, support, and self-belief.

Mahesh Datlecha
Madhya Pradesh

Farha Shaikh: Overcoming Adversity to Inspire Others



Hello everyone, my name is Farha Shaikh. Born and raised in Pune, India, I enjoyed a typical childhood filled with laughter and dreams. However, a severe back injury during my first year of college left me physically disabled and dependent on a wheelchair. Despite this, I refused to let it define me.

Coming from a supportive family of six, with my parents and siblings as my pillars of strength, I was determined to pursue independence. I found hope at Maya CARE, which offered opportunities for meaningful employment. With the support of mentors Sandhya Atram and Shikha Vishwakarma, I gradually adapted to remote work.

Today, as a Project Coordinator at Maya CARE, I manage multiple projects, facing challenges and seizing opportunities for growth. I am particularly passionate about Elephant Connect Education, empowering students through public speaking initiatives. Witnessing their transformation is incredibly rewarding.

My journey with Maya CARE has been transformative, proving that resilience and determination can overcome any obstacle. I am grateful for the opportunities and impact I've made. Looking ahead, I aspire to continue inspiring others through my story of triumph over adversity. My journey is a testament to the power of perseverance, serving as a beacon of hope for anyone facing challenges.

Thank you for letting me share my journey. Remember, no obstacle is insurmountable with courage and determination. Let's uplift and empower each other, one step at a time.



Guided by Faith: The Journey of Jaya Kishore

I am Jaya Kishore, born in a small town in Andhra Pradesh. In this quaint town, my childhood was filled with joy and laughter as I played endlessly with my friends. From a young age, I was captivated by cricket. My friends and I would watch the game on TV with immense happiness. Inspired by those moments, I began playing cricket and participated in school competitions. Gradually, through practice and determination, I honed my skills and started winning.

Life was moving smoothly until one tragic day when my mother, little sister, and I witnessed for My father's death. The shock and grief were overwhelming, and the loss felt insurmountable. I think about my mother often, and even today, I can't forget the pain in her eyes.

Years later, a glimmer of hope entered my life when I got a Government job as an Electrician. It felt like a small ray of light in the darkness. However, another tragic event struck our family when I was involved in an electrical accident that left me hospitalized for three months with little hope. This incident left me partially paralyzed.

Returning home, my mother supported me through physiotherapy, and slowly, I began to regain movement in my hand. Despite the dark times, I decided to pursue a Bachelor of Arts degree and joined various groups to rebuild my confidence. I shared my CV with Enable India and six weeks later, I joined Maya CARE in 2023. This opportunity boosted my confidence, improved my computer skills, and enhanced my communication abilities. Step by step, I learned how to handle challenges, and eventually, I saw the metaphorical raindrops in my desert-like life. Today, I am proud to be working as an Assistant Project Coordinator at Maya Care, managing multiple projects. I bring happiness to my mother and sister, who is a yoga instructor, and whose tips have greatly aided my recovery. My journey continues, and I dream of building a small, accessible house by 2025. I always trust that the hand of God is with us, guiding us and showing us the way.

Elderly Engagements: Personalized Care Stories



Sarojamma, an 83-year-old woman from Nagavarapalya, Bangalore, faced numerous challenges and triumphs in her life. Born in a time when girls had limited educational opportunities, she lost her husband in 2003 and raised five children alone. As her children built their families, Sarojamma found herself alone in Bangalore, struggling with aging and declining health. One day, she found solace in the Maya CARE Foundation volunteers, who treated her as a cherished member of their family. They provided assistance with medical needs and companionship, ensuring Sarojamma never felt abandoned or alone.

Sarojamma's journey with the foundation was not just about receiving aid; it was about finding purpose and belonging in her twilight years. The foundation's selfless acts of kindness inspired her to advocate for their cause and spread awareness among her peers and community members.

Sarojamma's story serves as a testament to the transformative power of compassion and empathy. Through her resilience and the unwavering support of the Maya CARE Foundation, she found solace and hope amidst life's trials and tribulations. Maya CARE Foundation emerged as a beacon of light, illuminating the lives of those in need, and for Sarojamma, it was a lifeline that guided her through the darkest of times.



Uma Shoshodia, a 68-year-old woman from Mayur Vihar, Delhi, experienced a sudden shift in her health due to her son's responsibilities as the sole provider for her family. Her son, who was the breadwinner and pillar of the family's support, was burdened by her health issues. As her son's workload increased, she felt helpless and without anyone to turn to.

During a dark moment, her son's friend suggested Maya CARE and its volunteer services. Initially hesitant, Uma decided to reach out to Maya CARE, fearing disappointment and burdening her son further. However, Rabia Azad, a compassionate Maya CARE volunteer, guided her through hospital visits and medication management. Her punctuality and dedication helped ease the burden on her family, and with each visit, the weight on her son's shoulders began to lighten.

Today, Uma is filled with gratitude for the unwavering support of Maya CARE Foundation, as their timely assistance has transformed their lives and provided comfort and solace during their darkest hours. With their support, her son can now focus on his responsibilities without constant worry about her well being.

Our Beneficiaries:



Mrs. Sudesh Choudhary, 82 years old, Chandigarh.

Dear Shelly ji, I'm deeply grateful for the immense support from Maya CARE Foundation during my hospital check-up on October 9th in Mohali. A special thanks to Shubham, the volunteer, for being exceptionally cooperative and helpful. Thanks again for the outstanding service. Best wishes to Maya CARE Foundation for continuing to make a positive impact on the lives of senior citizens.



Mrs. Jayalakshmi, 83 years old, Bengaluru.

I am Ramalingam, and I extend my sincere thanks for the outstanding support during my mother's hospitalisation. Facing the challenges of her fall and my father's funeral, Volunteer Selva Raj's timely assistance and compassionate care were invaluable. His dedication made a significant impact on my mother's recovery, and we are grateful for the exceptional service provided by Maya CARE.

Appreciation from Care home:



Sri Sai Prasanthi Old Age home, Bangalore

I am Kiran Kumar (Manager). Various people from the Maya Care Foundation visited our old age home. They spent quality time with elderly people. And conducted classical dance in our old age home. We are very happy and our elderly people are also happy. Thank you Maya Care Foundation, we



Hillside Nursing and Care center, Aylesbury UK

I am Marion (Manager, it was my pleasure to have Dr. Suresh Gokhale, Director of Maya CARE CIC, visit our care home. He engaged with the residents, teaching wheelchair exercises and breathing techniques, enriching our time together. I appreciate the qualitative time he spent with us and we are Looking forward to

Testimonials

Our BPM Clients:



Juliette AGM - HR Waycool Food and Products Private Limited

Waycool has been using Maya CARE services effective start of 2023. Over the course of the past six months I have seen the Maya CARE team grow in terms of their knowledge about various HR processes. It has been a pleasure working with Ms. Sowmya and Ms. Rizwana. They are very diligent, calls, meetings, participation etc. Both have a penchant for learning that is evident in the questions that they raise during the meetings. They have demonstrated confidence in handling the calls and as a result we are planning to open up the helpline to inbound calls also



Mr. Sanjeev Mantri - Executive Director, ICICI Lombard.

As a responsible and a socially committed organization, ICICI Lombard continues to serve the community with its varied activities. In the context of the ongoing pandemic, our association with Maya CARE began with a mandate of giving away reusable masks to old age homes across 15 cities in the country and providing vaccination to senior citizens as part of the COVID-19 relief initiative. Maya CARE is a team known to break barriers touching and impacting lives across India through their remarkable and spirited service. The way they work is inclusive and innovative, bringing forward the visually and hearing impaired, physically challenged and those with neuro-motor disabilities and providing them with meaningful work. Their committed team of volunteers have earned a reputation to go above and beyond overcoming challenges and reaching the needy on time.



Ashna Singh - Goodera, Lead-Partner Management

Maya Care Foundation has exemplified professionalism and dedication to the cause. They have proven to be invaluable partners in our shared mission to execute flawless volunteering events, consistently demonstrating integrity and a deep-seated belief in the power of collective action. We have successfully executed many volunteering events with Maya Care Foundation and engaged corporate volunteers for the same. It is with great confidence and enthusiasm that I recommend Maya Care Foundation as a partner of choice for anyone seeking to create lasting social impact. Thank you Maya Care Foundation for your unwavering partnership and dedication.

Leadership Recognition and Awards

1. The 'Project Bindu of the Year 2023' awarded to Shikha Vishwakarma (power Team)



Acknowledgment of outstanding leadership within the organization. (Bindu of the Year)

Maya CARE's leadership team and staff members are deeply honored to receive recognition and awards for their dedication, innovation, and impact. These accolades serve as a testament to our commitment to excellence and our relentless pursuit of our mission. We are especially proud to celebrate the achievements of our Bindu:

2. The 'Fast Pitch Competition' winner Jyoti More (Power Team), Ayush Garg (Voice Team), and Tarun Kumar (Powr Team).



3. Teens GOD NGO Award for the excellent service of work done by Ayush Garg (Voice Team).



4. Rotary Abilities Bangalore (Unsung Hero Award) for the excellent contribution of work, Sowmya S (Voice Team).



5. Featuring in Hello Mumbai Digital Magazine, as Social Entrepreneur of Business Process Outsourcing Unit (BPO), Sandhya Atram (Power Team).

Awards and Achievements Showcase

Maya CARE's relentless dedication to excellence and innovation has garnered numerous awards and accolades, serving as a testament to the impact of our work and the commitment of our team to our mission. Some of our notable recognitions include:



She Inspires Award National UK.
(Nov 23 2023)



MAYA CARE CIC (UK) WINS "BEST USE OF
TECH" AT THE GREAT BRITISH WORKPLACE
WELLBEING AWARDS 2024

Goonj National Award for
Vaccination Project. (Sep
02 2023)

Media Marvels: Coverage Highlights



Media Marvels: Coverage Highlights

CARE TO BE A FRIEND TO THE ELDERLY?

While changing lifestyles, modern living & kids moving away from home have left the elderly feeling all alone, there exist senior care institutions that provide them a high level of care and companionship



Modern lifestyle has led to the breakdown of traditional support structures in families. The elderly increasingly find themselves with little or no companionship to lead a healthy and happy life. Well, help is at hand these days. For a small amount, you can now rent companionship for your elderly and it is becoming a hit across metros and even Tier-2 cities.

"To cut across the sense of dissociation and loneliness seniors face, we provide home services where our volunteers and counselors provide emotional support, intellectual companionship and medical aid to those suffering from loneliness, mobility issues, dementia or other old-age-related illnesses so that they are able to live a fulfilling life," says, Archana Sharma, founder of Gurugram-based Samvedna Senior Care. Samvedna is one of the many non-medical

elderly care service providers that have sprung up in major Indian cities that provide personalised care and companionship to the elderly. The idea is a simple one. Not just to be a caregiver, but a friend and a constant companion to them.

Deepak Puri, who works out of San Francisco, availed of Samvedna's services for his parents who live in Delhi. He says, "My retired parents decided to live independently with no one else nearby to help them with everyday issues. So, I was delighted to arrange for regular home visits by a caregiver. He is also their friend, companion and someone to talk to."

Several of the volunteers at these institutions are young, between the age group of 20 and 40, which brings another interesting angle into the picture. The generation gap helps both parties learn from each other's experiences and also nurture a relationship much closer to that with their children or grandchildren.

Our volunteers are people in high-flying jobs, like bankers, professors, and dancers. We match our clients with a volunteer with similar interests.

-Pratyusha Pinnali, Maya Care NGO, Pune



माया केअर सेंटर च्या वतीने जेष्ठ नागरिकांनासाठी विना मूल्य सुविधा

प्रतिनिधी/ १९ सप्टेंबर

बोरोगाव येथे माया जोपासत माया केअर फाउंडेशन याद्वारे अकोला जिल्ह्यातील गरजू जेष्ठ नागरिक यांना विना मूल्य सुविधा देण्यात येत आहेत. मासिक १३ वर्षांपासून ही संस्था काम करत असून माय केअर तर्फे सर्व गरजू बुद्ध व्यक्तींना त्यांच्या भावीक वारिध्याने व आनंद करणे अशा गरजू यांची पूर्तता करण्यासाठी विनामूल्य सुविधा देते ज्यामुळे ते आनंदी आणि आत्मनिर्भर जीवन जगू शकतात. यापुढे ज्येष्ठ नागरिकांना हॉस्पिटलमध्ये घेऊन जाणे, बँकेच्या कामात मदत करणे, शासकीय कामात मदत करणे, दुकानातून आरपेरे आणून देणे, त्यांच्यासाठी वागत फोटो काढणे, विविध डॉक्टरांना कण्यासाठी घेऊन जाणे, त्यांच्यासाठी लिहिणे-वाचणे मनोरंजनात्मक खेळ खेळणे



तसेच त्यांच्यासाठी विविध कार्यक्रमांचे आयोजन करणे यासह अनेक प्रकारची मदत स्वयंसेवकांच्या व्दारे पूर्णपणे

मोफत केली जाते. सध्या ही संस्था भारताच्या ३९ शहरांमध्ये व छत्रपती चार शहरांमध्ये काम करते या संस्थेचे मागील कामकाज १०० पेक्षा जास्त दिव्यांग व्यक्ती आपल्या घरी वसून काम करत आहे त्यामुळे त्यांना योग्यपणे उपलब्ध होत आहे व तेही आत्मनिर्भर बनत आहे या संस्थेच्या मोफत अंतरापर्यंत

स्वतंत्र आनंदी आणि स्वयंसेवक जीवन जगण्यासाठी स्थानिक बंधुवर्ग आणि दिव्यांग व्यक्तींना स्वस्थ बनविण्यासाठी त्यांच्याकडून स्वतःच्या घरातून काम करून घेऊन त्यांच्यासाठी स्वतःच्या बंधुवर्गाचे उद्दिष्ट आहे तसेच जगातील प्रत्येक शहरातील जेष्ठ नागरिकांना ही सुविधा मोफत मिळावी व तेथील दिव्यांग व्यक्तींना योग्य उपलब्ध व्हावी या दिशेने संस्थेचे कामकाज सुरू आहे. आग्रहासाठी अशा प्रकारची मदत हवी असल्यास ९५५२५००४००/९५५२५२०४१२ या हेलपलाइनवर संपर्क साधावा असे आह्वान महाराष्ट्र राज्य सनस्य अभिजीत मास्त्री व मीडिया समन्वय अर्चना पोंदने यांनी केले आहे. अकोला जिल्ह्यात अनिल बिबरे, अकोला सिटी यादी अर्चना जोशी समन्वयक म्हणून काम पाहत आहे.



विरारमधील वृद्धाश्रमात माय केअर फाउंडेशनतर्फे मोफत नेत्र तपासणी करण्यात येऊन गरजूंना मोफत चष्मे वाटप करण्यात आले.

विरारच्या वृद्धाश्रमात मोफत नेत्र तपासणी

लोकमत न्यूज नेटवर्क
वसई : जीवन आनंद संस्था, खैरापाडा विरार (पूर्व) येथे निराधार वृद्धांचा आश्रम आहे. येथील वृद्धांची माय केअर फाउंडेशनतर्फे मोफत नेत्र तपासणी करण्यात आली व गरजूंना मोफत चष्मे वाटप करण्यात आले.

हा उपक्रम माय केअर फाउंडेशनच्या स्वयंसेविका शारदा परमेकर, श्वेता दवणे, प्रियांका मिस्त्री, माधुरी चरजरी व नेत्र चिकित्सक अश्विनी खंडारे यांचे मोलाचे योगदान लाभले. माय केअर फाउंडेशनकडून वृद्धांना मोफत सेवा दिली जात असते.

Hall of Fame: Acknowledging Excellence

Maya CARE takes great pride in recognizing and celebrating the invaluable contributions of our donors, volunteers, and supporters who have played a pivotal role in our journey towards creating a more inclusive and compassionate society. Their unwavering dedication and generosity have enabled us to empower the elderly and Champions with Disabilities (PWDs) and make a positive impact on countless lives. In the spirit of gratitude, we extend our heartfelt appreciation to each and every individual and organization listed below:

We extend our sincerest gratitude to each of these individuals and organizations for their continued support and commitment to our cause. Your generosity and kindness inspire us to continue our mission of empowering lives and fostering a strong sense of community and support. Thank you for being a part of the Maya CARE family and for making a difference in the lives of those in need.

Donors:

1. Social Venture Partners (SVP)
2. Deloitte (Delhi United Way)
3. Amazon
4. ICICI Foundation
5. Persistent Foundation
6. Legrand
7. Oracle
8. Desai Brothers
9. ISS Facilities
10. Rotork
11. UWD-Tata Power
12. Aquatech



Partners:

1. Sainath Phatangare, CA
2. Ms. Priya Menon, Lawyer
3. Ms. Purva Chopra, CS

Gratitude for Your Unwavering Dedication

Dear Volunteers

Maya CARE Foundation take a moment to express our heartfelt gratitude for your incredible dedication and hard work. Your commitment to serving Elderly with compassion and kindness is truly inspiring. Each of you brings unique strengths and a positive spirit to our team, making a significant impact on the lives of those we serve. Thank you for your unwavering support, your time, and your energy. It is your efforts that make our mission possible, and we deeply grateful for all that you do.

Together, we are making a difference.





Contact Information



Details for contacting the foundation for further information or support

For inquiries, assistance, or to get involved with Maya CARE, please reach out to us:

Join us in our mission to empower lives and build a more inclusive society.

Together, we can make a difference!

Toll Free Number: 1800 572 1343

Email ID: service@mayacare.org

Website: www.mayacare.org

